

**DMRT1 Antibody**  
**Rabbit mAb**  
**Catalog # AP91961**

## Specification

---

### DMRT1 Antibody - Product Information

Application	WB, IP
Primary Accession	<a href="#">Q9Y5R6</a>
Clonality	Monoclonal
<b>Other Names</b>	
CT154; dmrt1; DMT1;	
Isotype	Rabbit IgG
Host	Rabbit
Calculated MW	39473 Da

### DMRT1 Antibody - Additional Information

Dilution	WB~~1:1000 IP~~N/A
Purification	Affinity-chromatography
Immunogen	A synthesized peptide derived from human DMRT1
Description	May be required for testis development.
Storage Condition and Buffer	Rabbit IgG in phosphate buffered saline , pH 7.4, 150mM NaCl, 0.02% sodium azide and 50% glycerol. Store at +4°C short term. Store at -20°C long term. Avoid freeze / thaw cycle.

### DMRT1 Antibody - Protein Information

**Name** DMRT1

**Synonyms** DMT1

#### Function

Transcription factor that plays a key role in male sex determination and differentiation by controlling testis development and male germ cell proliferation. Plays a central role in spermatogonia by inhibiting meiosis in undifferentiated spermatogonia and promoting mitosis, leading to spermatogonial development and allowing abundant and continuous production of sperm. Acts both as a transcription repressor and activator: prevents meiosis by restricting retinoic acid (RA)-dependent transcription and repressing STRA8 expression and promotes spermatogonial development by activating spermatogonial differentiation genes, such as SOHLH1. Also plays a key role in postnatal sex maintenance by maintaining testis determination and preventing feminization: represses transcription of female promoting genes such as FOXL2 and activates male-specific genes. May act as a tumor suppressor. May also play a minor role in oogenesis (By similarity).

**Cellular Location**

Nucleus {ECO:0000255|PROSITE-ProRule:PRU00070}.

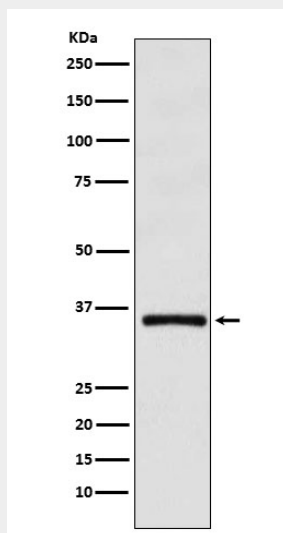
**Tissue Location**

Testis-specific. Expressed in prostate cancer (at protein level).

**DMRT1 Antibody - Protocols**

Provided below are standard protocols that you may find useful for product applications.

- [Western Blot](#)
- [Blocking Peptides](#)
- [Dot Blot](#)
- [Immunohistochemistry](#)
- [Immunofluorescence](#)
- [Immunoprecipitation](#)
- [Flow Cytometry](#)
- [Cell Culture](#)

**DMRT1 Antibody - Images**

Western blot analysis of DMRT1 expression in HL-60 cell lysate.